

Product Description

- High output high bay lighting
- Efficacy of 135 lm/W
- Optimized light distribution
- Maximized heat dissipation via unique vertical cooling structure
- Wireless and wired light control

Application

- Sports Arenas, Airports
- Warehouses, Gyms
- Superstores, Airplane hangars
- Factories

Certification

- UL
- FCC
- DLC



SEGA-H Series Specifications

Model Name		SEH500	SEH450	SEH400
Power Consumption		500W	450W	400W
CCT		5000K (4000K / 3500K / 3000K available)		
Luminous Flux *		67,500 lm	60,750 lm	54,000 lm
Luminous Efficacy *		135 lm/W		
CRI		80 Ra		
LED Driving Current		89 mA	80 mA	77 mA
Light Distribution		80°		
Input Voltage		347 ~ 480 Vac / 120 ~ 277 Vac		
Input Current		Max. 6.0A(@120Vac)	Max. 5.5A(@120Vac)	Max. 5.0A(@120Vac)
		Max. 1.9A(@347Vac)	Max. 1.8A(@347Vac)	Max. 1.6A(@347Vac)
Power Factor		≥0.9 at Max load		
Frequency		50 / 60 Hz		
Surge Protection		Line – Line 2kV / Line – FG 4kV		
Driver Type		Constant Current (CC)		
Fixture Manufacturer		GigaTera Inc.		
Size	Integrated Driver	Ø18.9 x 28.8 (inch) / Ø480 x 731.2 (mm)		
	Separated Driver	SEH : Ø18.9 x 10.9 (inch) / Ø480.0 x 277.0 (mm), Driver : 22.8 x 6.7 x 6.6 (inch) / 579.0 x 170.0 x 168.0 (mm)		
Weight	Integrated Driver	44.1 lb / 20.0 Kg		
	Separated Driver	SEH : 29.3 lb / 13.3 kg, Driver : 15.4 lb / 7 kg		
Material	Body	Cast Aluminum		
	Optic	Al Coating Reflector		
	Cover	Tempered Glass 4.0T (Frosted)		
Finish		Powder Coating		
IP Rating		-		
Operating Temperature		-22°F ~ 140°F / -30°C ~ 60°C		
Option	Control	Wireless (ZigBee) / Wired (0-10V, RS-485, DMX-512)		
	Mounting	Ceiling Bracket (Pipe)		
Warranty		5 Years (12 hours usage per day)		

* Tolerance : ± 5%

SEGA-HP Series

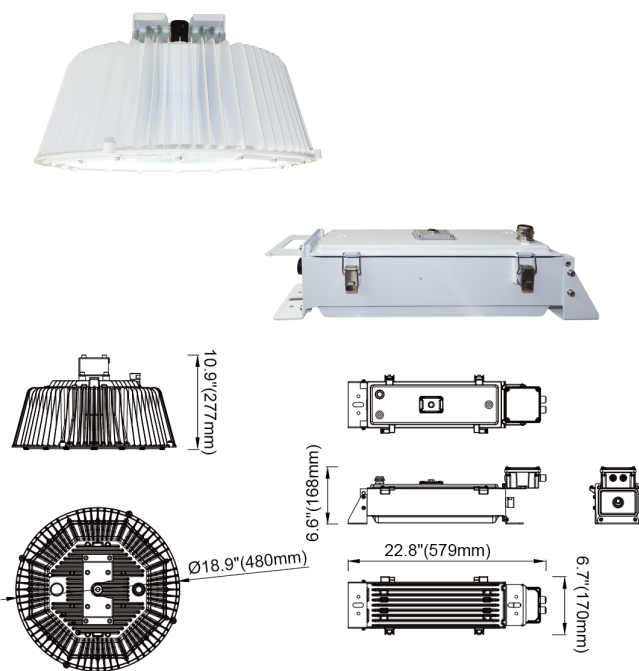
Integrated Driver type



Size

Ø18.9 x 28.8 (inch)
Ø480 x 731.2 (mm)

Separated Driver type



Size

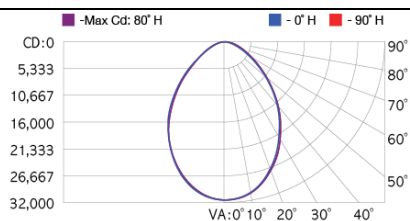
SEH Ø18.9 x 10.9 (inch) / Ø480.0 x 277.0 (mm)
Driver 22.8 x 6.7 x 6.6 (inch) / 579.0 x 170.0 x 168.0 (mm)

Photometry Data

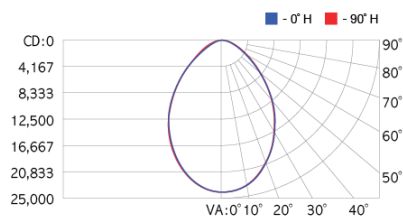
SEH500 / 5000K / 80° / Frosted

-

SEH450 / 5000K / 80° / Frosted

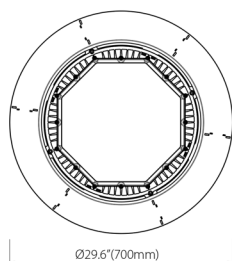
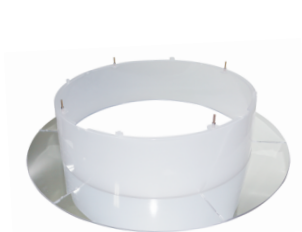


SEH400 / 5000K / 80° / Frosted



Control System (Optional)

ZigBee	Wireless Control	
Input Voltage	15 Vdc	
Max. Power Consumption	0.3W (@15 Vdc)	
Standard	2.4 GHz – IEEE 802.15.4 (Compatible)	
Network	Mesh	
RF Tx Power	Max. +8 dBm (Typ. 5 dBm)	
Data Rate	250 kbps	
Security	128 bit AES Encryption Algorithms	
Antenna	Omni Type, 2 dBi	
0-10V	Wired Control	
Factory Installed	The maximum quantity at the time of group control is according to dimmer switch and actuator supply wattage	
Wired Control	RS-485	DMX-512
Input Voltage	15 Vdc	
Max. Power Consumption	0.2W (@15 Vdc)	
Communication Method	RS-485	DMX-512
Data Rate	115,200 bps, 8-N-1	250,000 bps, 8-N-2

Diffuser (Optional)

Ordering Information
Ordering Code Usage : SEH500-C50080TN

SEH	000	-	O	OO	000	O	O	O
	Power Consumption		Input Voltage	CCT (K)	Beam Angle	Control System	Surge	Driver type
	500 = 500W 450 = 450W 400 = 400W		C = 347 ~ 480V E = 120 ~ 277V	50 = 5000K 40 = 4000K 35 = 3500K 30 = 3000K	080 = 80°	T = Wired(0-10V) W = Wired(RS-485) M = Wired(DMX-512) Z = Wireless(Zigbee) N = None	S = Surge N = None	P = Remote Driver